

CASE II
AGRICULTURE

ADVANCED FARMING SYSTEMS **AFS**

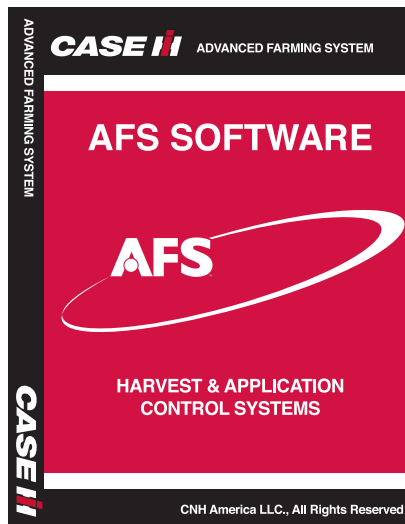


HISTORY

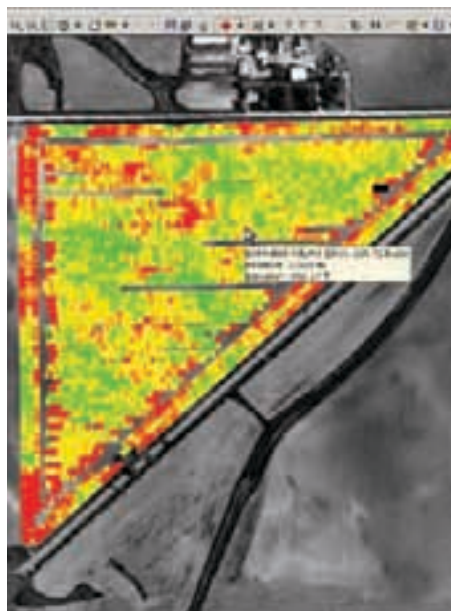
Case IH has been at the forefront of precision farming for more than a decade, having launched its first Advanced Farming System in 1995. By giving farmers the ability to control the entire crop production cycle, AFS helped growers optimize yields, input costs and profits.



Today's **AFS AccuGuide™** takes precision farming to the next level, with automated guidance systems that deliver pinpoint accuracy when used in combination with Case IH equipment and AFS precision farming systems.



Import and export **AFS AccuGuide** autoguidance field patterns.



CONTROL. MEASURE. ANALYZE.

AFS DESKTOP SOFTWARE.

AFS desktop software enables you to layer yield and moisture maps on top of aerial photographs along with precision farming information including: Trimble®, Ag Leader Technology® and GreenStar® proprietary systems. Customizable charts, graphs and layered maps can be derived for analysis of variety/hybrid, plant population, and soil topography. Dimensions and field-to-field yields can also be used for year-over-year comparisons.

Coverage, Yield, Moisture, and Fuel (with **AFS Field Performer Software**) Maps are able to be created using the **AFS Desktop Software**.



AFS ACCUGUIDE AUTOGUIDANCE

PRECISE. PRODUCTIVE. PORTABLE.

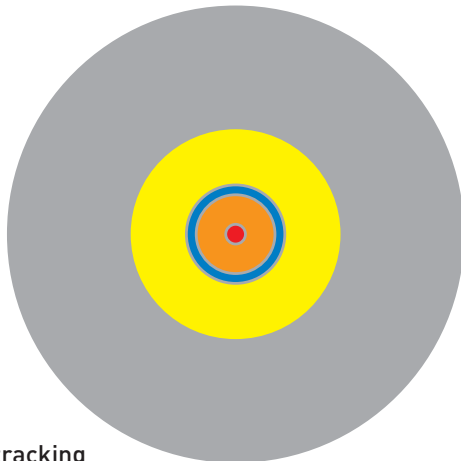
PRECISION COMPONENTS MATCH YOUR OPERATION.

Case IH Advanced Farming Systems (AFS) equipment fully integrates cutting-edge precision farming components for every operation. With features like sub-inch repeatable auto-guidance accuracy, yield and moisture mapping, as applied and prescription planting, the AFS system helps you maximize productivity for optimal crop yields.

Case IH is proud to introduce the industry first complete factory installed autoguidance system. As a compliment to the autoguidance ready which is now in the tractor base, you can also order all of your autoguidance completing kits right from the factory.

HOW ACCURATE IS DGPS & RTK GPS?

- Case IH RTK +/- 1 in.
 - 1 in. repeatable
 - 1 in. pass to pass
- OmniSTAR* HP +/- 4 in.
 - 2-4 in. pass to pass
- OmniSTAR XP +/- 8 in.
 - 3-5 in. pass to pass
- WAAS +/- 3 ft.
 - 6-12 in. pass to pass
- Autonomous GPS 15-45 ft.
 - Hiking, boating, vehicle tracking



The AFS AccuGuide System:

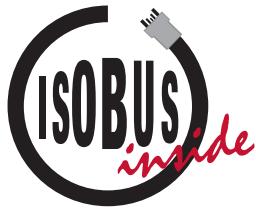
- Saves input costs by reducing skips and overlaps.
- Eliminates the guesswork of row swath spacing to ensure each swath is identical, reducing tight headland turns and overlaps.
- Maintains perfectly straight and repeatable rows with RTK accuracy.
- Allows data storage for later analysis and benchmarking to maximize input investments.
- Controls traffic patterns and decreases compaction resulting in higher yields and larger profits.
- Reduces operator stress and fatigue.

* Trimble, Ag Leader Technology, GreenStar and OmniSTAR are registered trademarks of their respective companies.

PERFORMANCE & VEHICLE CONTROL

UNMATCHED PORTABILITY.

The AFS Pro 600 display user interface system, which is ISO11783 compliant, provides unmatched portability, moving easily among pieces of your equipment to provide automated adjustments and control for each task.



► Machine function and control are incorporated into the **AFS Pro 600 color display** on Axial-Flow 7010 & 8010 models. For all Axial-Flow models, yield, moisture monitor, mapping and AFS AccuGuide autoguidance functions are displayed through the AFS Pro 600.

▼ **The AFS Pro 600** is a fully customized color display. It allows the operator to view as much as or as little information on any one of the six run screens. Simply change the operator name and the screen layout will change.



► **The AFS Field Performer** can be equipped in your new Case IH Puma, Magnum, Steiger, and QUADTRAC tractors and Axial-Flow 7010 & 8010 combines. It allows the operator to record and log fuel usage, individual operator performance, acres per hour, and engine efficiencies.

A photograph of the AFS Field Performer performance screen. The screen displays a table of performance metrics for a specific task. The table has columns for Task, Area, and various performance indicators. The data is as follows:

Task	Area
CASE IH	6.47 ac
Distance	964.3 feet
Work Rate, Avg	6.2 ac/h
Engine Load, Avg	6.6 gal
Fuel Use, Work	6.0 gal/ac
Fuel Use, Avg	6.0 gal/ac
Fuel Use, Avg	6.0 gal/ac
Fuel Use, Avg	6.0 gal/ac
Area Worked	3.26 ac



WWW.CASEIH.COM

SAFETY NEVER HURTS!™ Always read the Operator's Manual before operating any equipment. Inspect equipment before using it, and be sure it is operating properly. Follow the product safety signs, and use any safety features provided.

Case IH is a registered trademark of CNH America LLC. Any trademarks referred to herein, in association with goods and/or services of companies other than CNH America LLC, are the property of those respective companies.

CNH America LLC reserves the right to make improvements in design and changes in specifications at any time without notice and without incurring any obligation to install them on units previously sold. Specifications, descriptions and illustrative material herein are as accurate as known at time of publication, but are subject to change without notice. Availability of some models and equipment builds varies according to the country in which the equipment is used.

